

# ANIMA MUNDI



## PRESS CONTACT

Jamie Mills & Clair Matheson  
mail@animamundigallery.com  
+44 (0)1736 793121

## PRESS RELEASE

### *A Skin Made Porous*

EXHIBITION DATES: 10 February – 23 March 2024

PREVIEW EVENING: Friday 9 February, 7.00 - 9.00 PM

WHERE: Anima Mundi, Street-an-Pol, St Ives, Cornwall, TR26 2DS

WEBSITE: [www.animamundigallery.com](http://www.animamundigallery.com)

'A Skin Made Porous' is a three floor mixed, multi-media, exhibition curated by Joseph Clarke.

*"Out beyond ideas of wrongdoing and rightdoing, there is a field. I'll meet you there. When the soul lies down in that grass, the world is too full to talk about. Ideas, language, even the phrase each other doesn't make any sense."- Jalāl al-Dīn Rūmī*

This introduction is bookended by two quotes, which whilst seemingly oppositional, indicate something intrinsic about the contradictory nature of our experience. A condition which feels ever pertinent when viewing our individual and collective exterior and interior placement in the world. This existential dichotomy provides a poetic seed from which this exhibition has grown, and in turn become something other. I hope that it provides viewers with a space and opportunity to contemplate and recognise the guarded

self as a solitary entity, armoured. Yet our shells are there to be breached, by an evolving process of physical and metaphysical transformation. The disparate emotional effects of the universe we inhabit, allow us the potential to retreat or to transcend towards a greater sense of separation or a wider unity, where we and all become one.

*"It is often tragic to see how blatantly a man bungles his own life and the lives of others yet remains totally incapable of seeing how much the whole tragedy originates in himself, and how he continually feeds it and keeps it going. Not consciously, of course—for consciously he is engaged in bewailing and cursing a faithless world that recedes further and further into the distance. Rather, it is an unconscious factor which spins the illusions that veil his world. And what is being spun is a cocoon, which in the end will completely envelop him."* — Carl Jung, 'Aion'

The exhibition includes artworks by (In alphabetical order) : Massimo Angei, Paul Benney, Gabriel Tendai Choto, Phoebe Cummings, Luke Frost, Youki Hirakawa, Simon Hitchens, Arthur Lanyon, Sam Lock, Jamie Mills, Malcolm Pate, Jonathan Michael Ray, Marija Rinkevičiūtė, Agnes Treherne, David Kim Whittaker, Joy Wolfenden Brown, Carlos Zapata

#### ABOUT ANIMA MUNDI

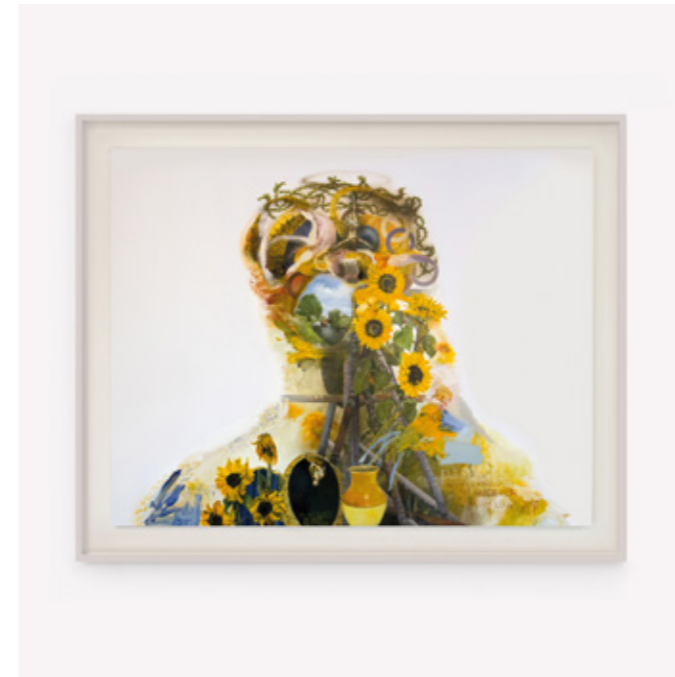
Anima Mundi was founded by Joseph Clarke, who has curated in excess of 100 exhibitions over a twenty year period, working with international artists in all media. The gallery is based in a former Christian Science reading rooms in St Ives, Cornwall which was converted in to a significant gallery space. The space is one of the largest outside of London which has helped to secure Anima Mundi's international reputation for representing the very best in Contemporary art. Since its creation, Anima Mundi has strived to offer its international collectors unique access to a diverse offering of contemporary art whilst supporting its artists through collaborations with museums and art centres around the world.

FOLLOW US : Instagram @animamundigallery #animamundigallery

#### SELECTED IMAGE LIST :



Phoebe Cummings 'Paleozoic Bouquet'  
unfired clay, glass, wood, wire, 60 x 25 x 25 cm



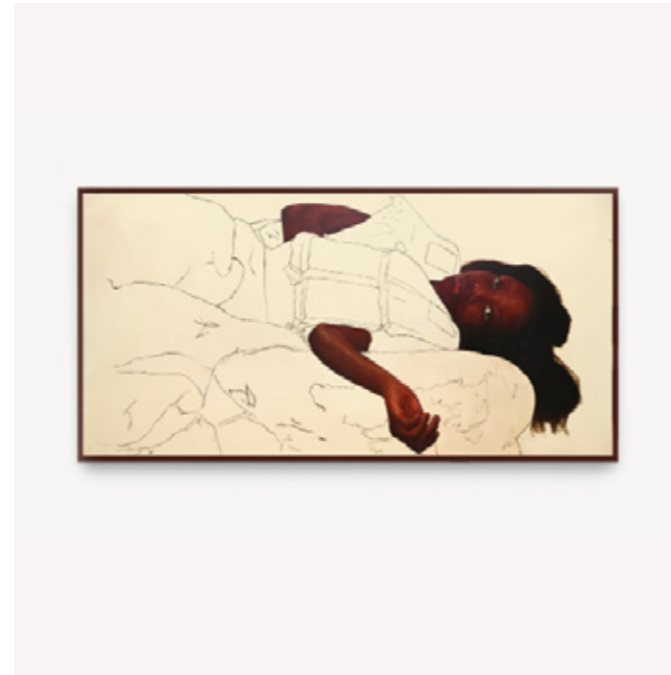
David Kim Whittaker 'New Sunflowers'  
oil and acrylic on canvas, 180 x 140 cm



Youki Hirakawa 'Untitled (Tear)'  
single channel video



Agnes Treherne 'Bucks Stream'  
oil on birch panel, 53 x 61 cm



Gabriel Tendai Choto 'Stranding'  
oil on panel, 61 x 122 cm



Carlos Zapata 'Vessel'  
polychromed wood, 18 x 27 x 20 cm



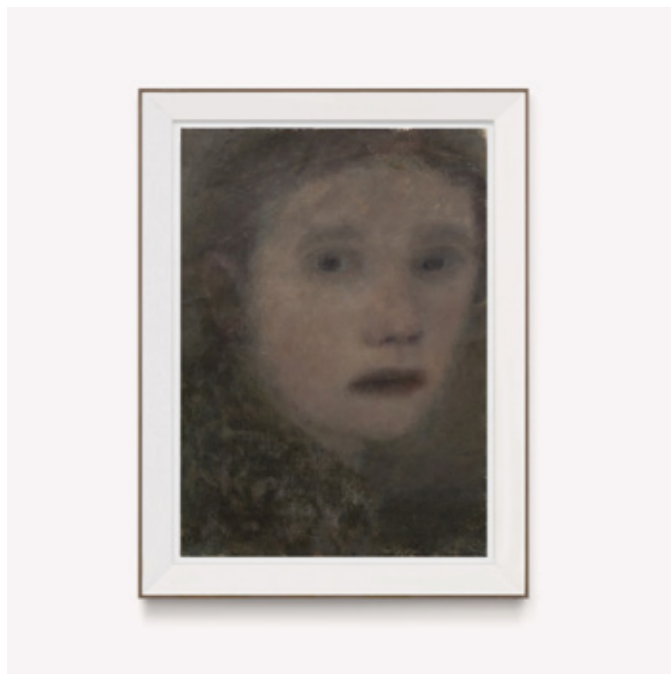
SAm Lock 'Shadow Is Yours II'  
mixed media on canvas, 240 x 120 cm



Jamie Mills 'Sentinel Refuge'  
rubber, wool, cotton scrim, thread . 32 x 21 x 6.5 cm



Arthur Lanyon 'Mouth of Conduit'  
oil, oil stick, charcoal, gesso, spray paint, collage on linen, 217 x 170 cm



Joy Wolfenden Brown 'Her Inward Glance'  
oil on canvas, 52 x 37 cm



Simon Hitchens 'More Than Human'  
rock, wax, resin, 28 x 50 x 36 cm



Paul Benney 'Horror Vacui'  
digitally animated original painting on media player and monitor



Marija Rinkevičiūtė 'A Broken Painting'  
mixed media on linen mounted on wooden panel, 30 x 20 cm